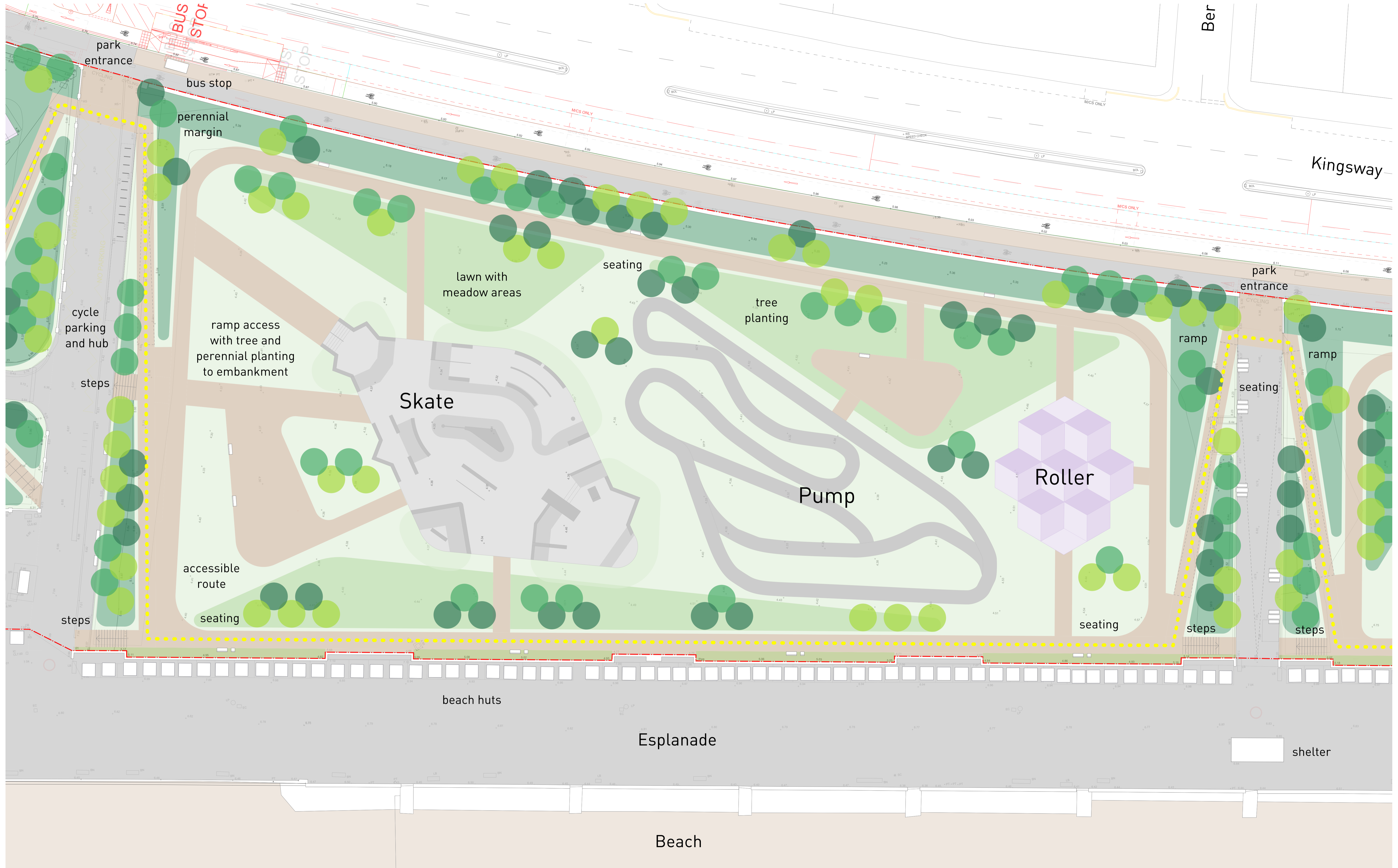


# KINGSWAY TO THE SEA: WEST HOVE SEAFRONT PUBLIC REALM IMPROVEMENTS

## SKATE / PUMP / ROLLER SPACES



# KINGSWAY TO THE SEA: WEST HOVE SEAFRONT PUBLIC REALM IMPROVEMENTS

## SKATE / PUMP / ROLLER SPACES



Artist's impression, view from east down new access steps into the Skate Plaza / Pump Track / Roller Rink



Designer's impression, view of new skate park plaza concept - a uniquely accessible design for all users, specific to West Hove as the outcome of detailed stakeholder consultations, this new facility will encourage young children and learners, with family participation, as well as older peers

### NEW WHEELED SPORTS AREA

- The existing skate park at Hove Lagoon will be replaced by a new 'Plaza' facility at the west end of the old Pitch & Putt space
- Next to the Skate Plaza will be a new Pump Track
- A new Roller Rink will be at the east end of the space
- All facilities will be integrated into the park's garden landscape
- All facilities will be family-friendly, encouraging learners and all ages of user, and inviting cross-over between facilities
- Increased positive occupation and use of the park's spaces will provide passive surveillance throughout, reducing risks of ASB consistent with the public realm design principles adopted across the whole Linear Park
- There will be easy access to/from the Big Beach Cafe in Hove Lagoon from the Esplanade cross-route



Under-utilised and inaccessible public realm of old Pitch & Putt space (west)



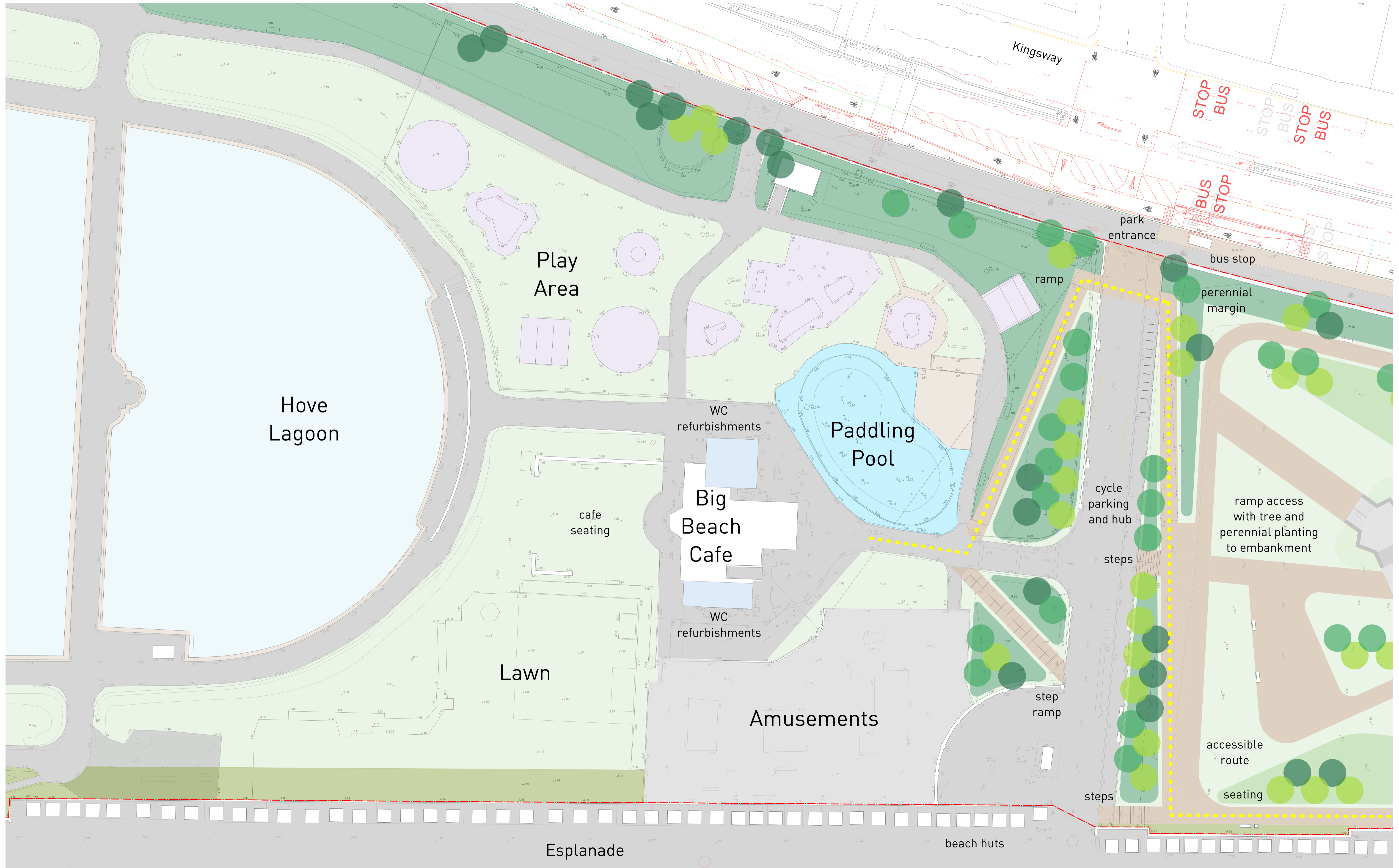
All ages wheeled sports encourages active travel, and better health and well-being



Pump Track precedent showing integration of track with landscape (Newhaven)

# KINGSWAY TO THE SEA: WEST HOVE SEAFRONT PUBLIC REALM IMPROVEMENTS

## HOVE LAGOON

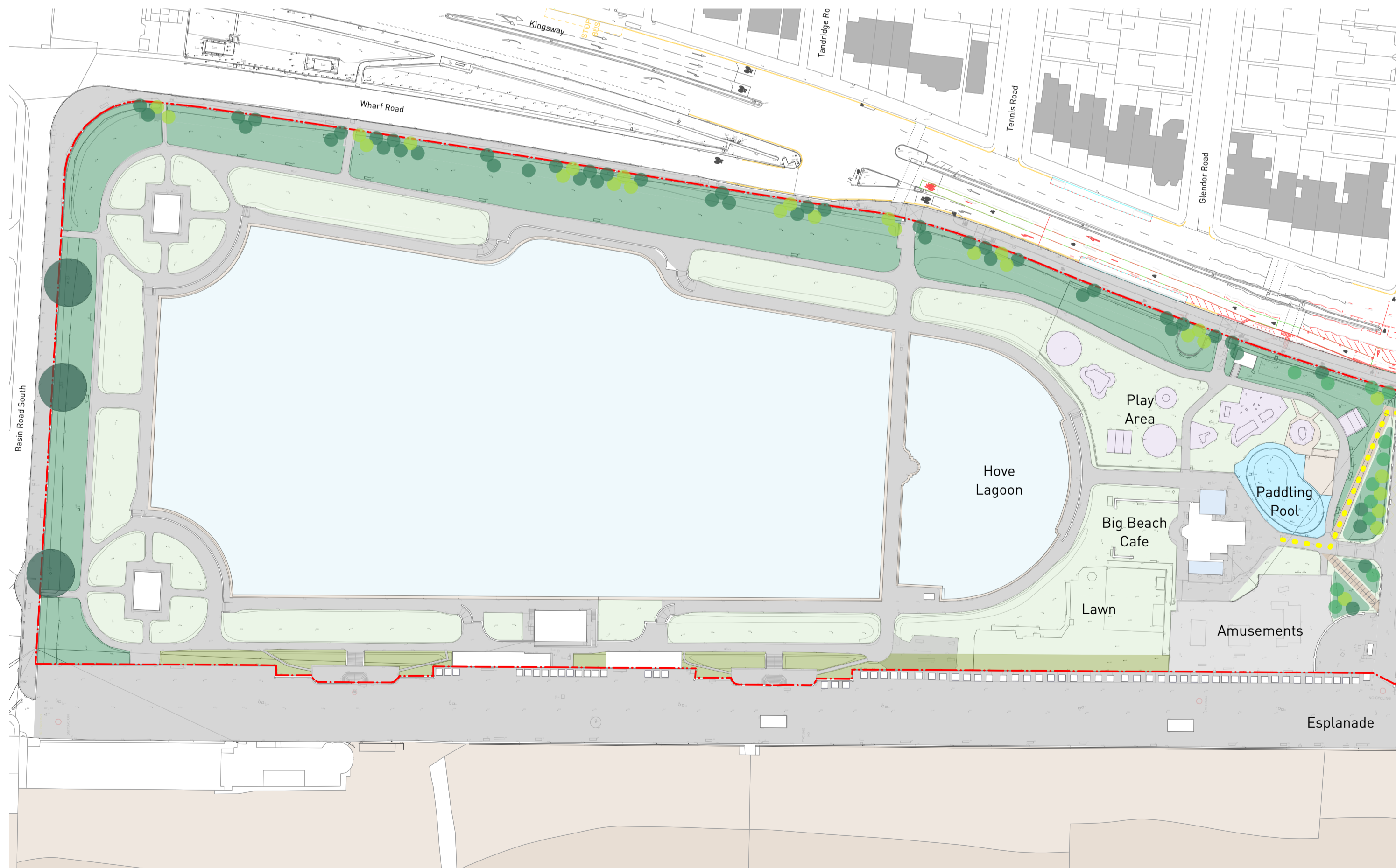


# KINGSWAY TO THE SEA: WEST HOVE SEAFRONT PUBLIC REALM IMPROVEMENTS

## HOVE LAGOON



Sketch view from north looking south down a new accessible ramp towards the Big Beach Cafe with the esplanade in the background



Overall Hove Lagoon Plan, 1:1000 at A1

### BETTER ACCESSIBILITY AND RELOCATED AMUSEMENTS

- New inclined ramp and stepped ramp accessibility will be provided for the first time to the east end of Hove Lagoon, also improving the approach to the Big Beach Cafe
- Amusements will be relocated into the existing skate park space, releasing the lawn around the south east of the Lagoon for more Cafe spill-out or other uses like outdoor gym (not included in this project)
- WCs at the Big Beach Cafe will be refurbished



Existing eastern approach to the Big Beach Cafe is inaccessible



Existing Amusements area



Water play precedents (Happy Mount, Manchester) for Paddling Pool enhancements